



TRAVIS INDUSTRIES
HOUSE OF FIRE

864 HO EF GSR2 - Cheat Sheet

The 864 HO EF GSR2 has several new features and characteristics that require special attention during installation and set-up. This unit uses the new GreenSmart 2 system. Refer to the owner's manual for full details.

GreenSmart™ 2

This heater has been updated with the 2013 version of GreenSmart™ 2 components from SIT. These components function in a near identical fashion to the previous 2012 components. The primary differences are:

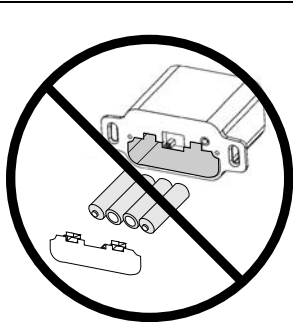
- The accent light now has dimming capability built into the remote.
- The pilot may be switched from intermittent (IPI) to standing pilot from the remote.

Refer to the owner's manual for full details.

Remote Control / Pilot Warnings



Installing batteries in the battery holder or connecting the appliance to power may automatically initiate the CPI pilot mode, resulting in a lit pilot flame. Do not place combustibles in the firebox.



KEEP BATTERIES AND COVER INSTALLED AT ALL TIMES

The remote control system requires the batteries and battery cover to remain in place at all times. Once the batteries or cover are removed, the system may re-start in standing pilot mode. If this occurs when the heater is in Remote Mode, you will not be able to turn the heater off manually from the battery box.

If you need to replace dead batteries, make sure to **turn the appliance off** before removing the batteries.

NOTE: If the batteries go dead, the system will operate normally as long as household power (120v AC) is present.

Installation Warnings

- **Framing Depth is Different – Top Vent vs. Rear Vent** See installation manual for details.
- **45° Flue Off Back of Fireplace** This fireplace has a 45°, 8" diameter starter section. Make sure to include a 45° elbow when planning your vent or order the minimum vent kit when venting to the rear (Minimum Vent Kit "C" – 96200316).
- **Thimble Required when Venting to Rear** If venting directly to the rear with no rise, a thimble is required (included in the Minimum Vent Kit "C" – 96200316). All other installations use a 1" firestop (available from Duravent) when passing through a wall or ceiling.
- **May Use 6-5/8" Vent if Terminated Vertically** See manual for details.
- **Fiber Board Above the Fireplace** The fireplace has a pre-attached 7-3/4" strip of fiber board above the fireplace. Make sure to accommodate the fiber board in your plans. This area is covered with tile or other non-combustible facing. NOTE: The studio trim is 4-1/2" wide and does not fully cover this area and is not recommended at this time.